

1) CONSTRUCTION:		NOM. DIA.
CONDUCTOR:	28 AWG 7/36 STRANDED TINNED COPPER	.015"
INSULATION:	HIGH DENSITY POLYETHYLENE, .009" NOM. WALL THICKNESS	.033"
PAIRS:	COLOR CODED SINGLES TWISTED INTO PAIRS	.066"
CABLE:	(5) TWISTED PAIRS TWISTED TOGETHER TO FORM A CABLE CORE.	.154"
SHIELD:	ALUMINIZED POLYESTER FOIL SHIELD (FOIL OUT, 100% COVERAGE) WITH A 28 AWG STRANDED TINNED COPPER DRAIN WIRE IN CONTACT WITH THE METALIZED SURFACE. A SECOND SHIELD OF 36 AWG TINNED COPPER BRAID (90% MINIMUM COVERAGE) SHALL BE APPLIED OVER THE FOIL SHIELD.	.180"
JACKET:	POLYVINYLCHLORIDE, CHROME GRAY, .032" NOM. WALL THICKNESS	.244"
	OVERALL CABLE DIAMETER	

2) PHYSICAL PROPERTIES:	
TEMPERATURE RATING, MAX.	60°C, 75°C & 80°C
WT./M', NOM., NET.	37.3 LBS.

3) ELECTRICAL CHARACTERISTICS:	
CAPACITANCE, MUTUAL, NOM.	15.5 PF/FT.
CAPACITANCE, GROUNDED, NOM.	27.5 PF/FT.
CHARACTERISTIC IMPEDANCE, NOM.	100 Ω AT 1 MHZ
DIELECTRIC WITHSTANDING, MIN VOLTAGE RATING, MAX.	1500V RMS
	300V
D.C. RESISTANCE, MAX. PER ASTM B286	68.2 Ω/1,000'

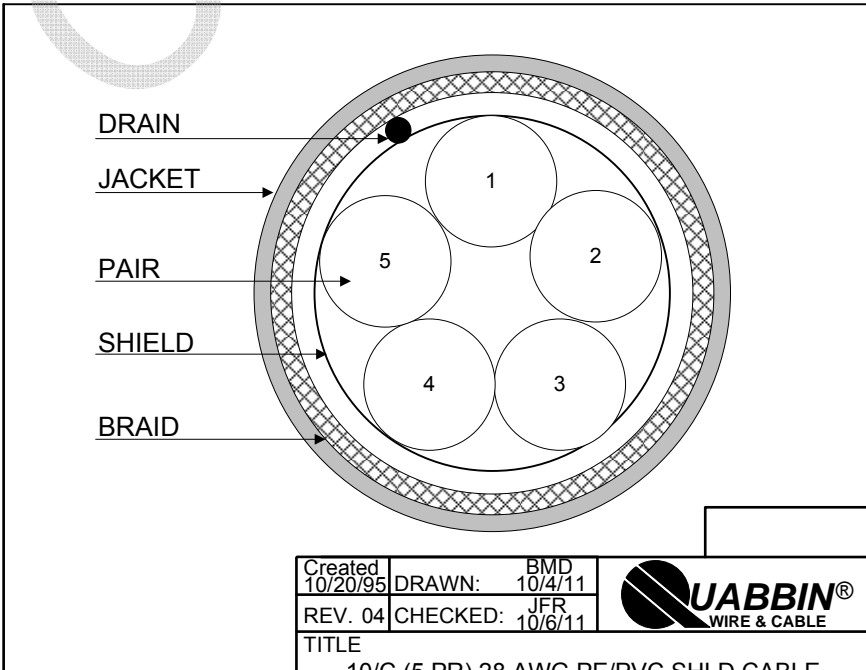
- 4) AGENCY APPROVALS:
 NEC (UL) TYPE CL2
 (UL) STYLE 2919 80C 30V
 CSA TYPE CMG

5) APPLICATION:
 MID CAPACITANCE RS-422 COMPUTER INTERCONNECT, EXTENDED DISTANCE CABLE. RoHS COMPLIANT MATERIALS.

6) PRINT:
 QUABBIN 9510R (UL) TYPE CL2 28 AWG 75C SHIELDED OR AWM 2919 -- LOW VOLTAGE COMPUTER CABLE -- CSA LL51726 TYPE CMG 60C -- RoHS -- **(LOT DESIGNATOR)**

- 7) COLOR CODE:
 1. BLACK X RED
 2. BLACK X WHITE
 3. BLACK X GREEN
 4. BLACK X BLUE
 5. BLACK X YELLOW

8) PACKAGING:
 TO BE PACKAGED AS PER QWC'S STANDARD PACKAGING.



CUSTOMER APPROVAL:

DATE:

Created 10/20/95	DRAWN: BMD 10/4/11	
REV. 04	CHECKED: JFR 10/6/11	
TITLE		
10/C (5 PR) 28 AWG PE/PVC SHLD CABLE -- TYPE CL2, STYLE 2919, CSA TYPE CMG		
QUABBIN P/N	9510	1 of 1