

1) CONSTRUCTION:

| | | | |
|-------------|---|------------------------|-----------------------|
| CONDUCTOR: | 24 AWG 7/32 STRANDED TINNED COPPER | NOM. DIA. | .024" |
| INSULATION: | LOW DENSITY POLYETHYLENE, .025" NOM. WALL THICKNESS | | .074" |
| CABLE: | COLOR CODED SINGLES TWISTED INTO A PAIR | | .148" |
| SHIELD: | ALUMINIZED POLYESTER FOIL SHIELD (FOIL OUT, 100% COVERAGE) WITH A 24 AWG STRANDED TINNED COPPER DRAIN WIRE CONTACTING THE METALIZED SURFACE FOR EASY TERMINATION. A SECOND SHIELD OF 36 AWG TINNED COPPER BRAID (65% MINIMUM COVERAGE) SHALL BE APPLIED OVER THE FOIL SHIELD. | | .174" |
| JACKET: | POLYVINYLCHLORIDE, CHROME GRAY, .032" NOM. WALL THICKNESS | OVERALL CABLE DIAMETER | .238" (BY PI TAPE) |

2) PHYSICAL PROPERTIES:

| | |
|--------------------------|-------------------|
| TEMPERATURE RATING, MAX. | 60°C, 75°C & 80°C |
| TEMPERATURE RATING, MIN. | -20°C |
| WT./M', NOM., NET. | 28.8 LBS. |

3) ELECTRICAL CHARACTERISTICS:

| | |
|-------------------------------------|---------------|
| CAPACITANCE, MUTUAL, NOM. | 15.5 PF/FT. |
| CAPACITANCE, GROUNDED, NOM. | 29.0 PF/FT. |
| DIELECTRIC WITHSTANDING, MIN. | 1500V RMS |
| VOLTAGE RATING, MAX. | 300V |
| D.C. RESISTANCE, MAX. PER ASTM B286 | 26.2 Ω/1,000' |
| CHARACTERISTIC IMPEDANCE, NOM. | 100 Ω |

4) AGENCY APPROVALS:

- NEC (UL) TYPE CM
- UL AWM STYLE 2448 80C 30V
- CSA TYPE CMG

5) APPLICATION:

LOW CAPACITANCE RS-422 AND RS-485 COMPUTER INTERCONNECT, EXTENDED DISTANCE CABLE.
RoHS COMPLIANT MATERIALS.

6) PRINT:

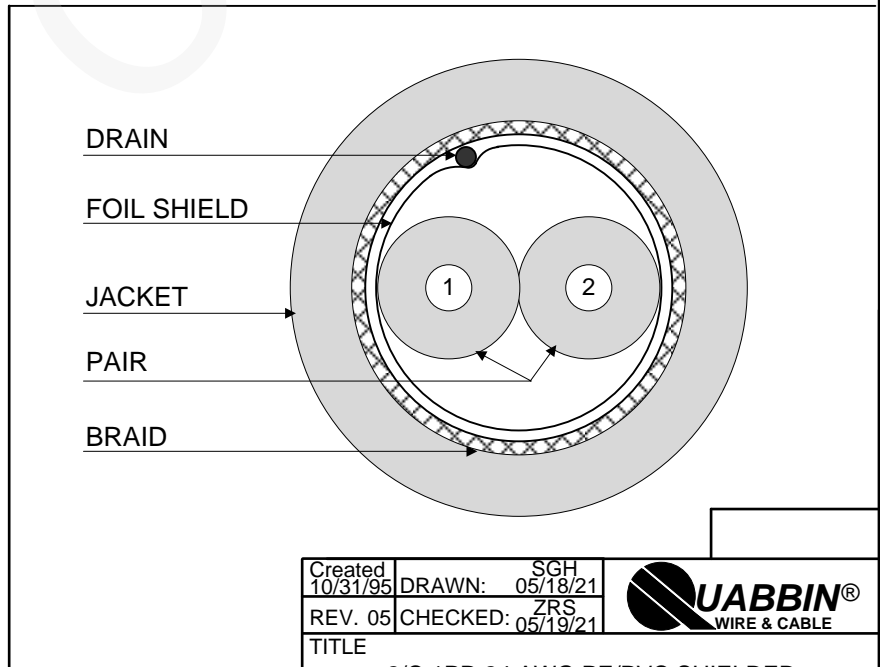
QUABBIN 8302 (UL) TYPE CM 24 AWG 75C SHIELDED OR AWM 2448 -- LOW VOLTAGE COMPUTER CABLE --
CSA LL51726 CMG 60C -- RoHS -- **(LOT DESIGNATOR)**

7) COLOR CODE:

1. BLACK X 2. BLACK/WHITE

8) PACKAGING:

TO BE PACKAGED AS PER QWC'S
STANDARD PACKAGING



CUSTOMER APPROVAL:

DATE:

| | | |
|--|--------------------------|--------|
| Created 10/31/95 | DRAWN: SGH 05/18/21 | |
| REV. 05 | CHECKED: ZRS 05/19/21 | |
| TITLE 2/C 1PR 24 AWG PE/PVC SHIELDED -- TYPE CM, AWM 2448, CSA CMG | | |
| QUABBIN P/N | 8302 | 1 of 1 |