

1) CONSTRUCTION:

CONDUCTOR:	24 AWG 7/32 STRANDED TINNED COPPER	NOM. DIA.	.024"
INSULATION:	SEMI-RIGID POLYVINYLCHLORIDE, .010" NOM. WALL THICKNESS		.044" ± .001"
CABLE:	(4) INSULATED CONDUCTORS TWISTED TOGETHER TO FORM A CABLE CORE		.106"
SHIELD:	AN ALUMINIZED POLYESTER FOIL SHIELD (FOIL OUT, 100% COVERAGE) SHALL BE APPLIED OVER THE CABLE CORE AND SHALL CONTAIN A 24 AWG 7/32 STRANDED TINNED COPPER DRAIN WIRE CONTACTING THE METALIZED SURFACE FOR EASY TERMINATION.		.116"
JACKET:	POLYVINYLCHLORIDE, CHROME GRAY, .032" NOM. WALL THICKNESS	OVERALL CABLE DIAMETER	.180" ± .010" (BY MICROMETER)

2) PHYSICAL PROPERTIES:

TEMPERATURE RATING, MAX.	60°C & 80°C
TEMPERATURE RATING, MIN.	-20°C
WT./M', NOM., NET.	18.8 LBS.

3) ELECTRICAL CHARACTERISTICS:

CAPACITANCE, MUTUAL, NOM.	33 PF/FT.
CAPACITANCE, GROUNDED, NOM.	65 PF/FT.
DIELECTRIC WITHSTANDING, MIN.	2000V RMS
VOLTAGE RATING, MAX.	300V
D.C. RESISTANCE, MAX. PER ASTM B286	26.2 Ω/1,000'

4) AGENCY APPROVALS:

- NEC (UL) TYPE CM
- UL AWM STYLE 2464
- CSA AWM FT4

5) APPLICATION:

RS-232 COMPUTER INTERCONNECT, INSTRUMENTATION, SOUND, BROADCAST, CLASS 2 CIRCUITS.
RoHS COMPLIANT MATERIALS.

6) PRINT:

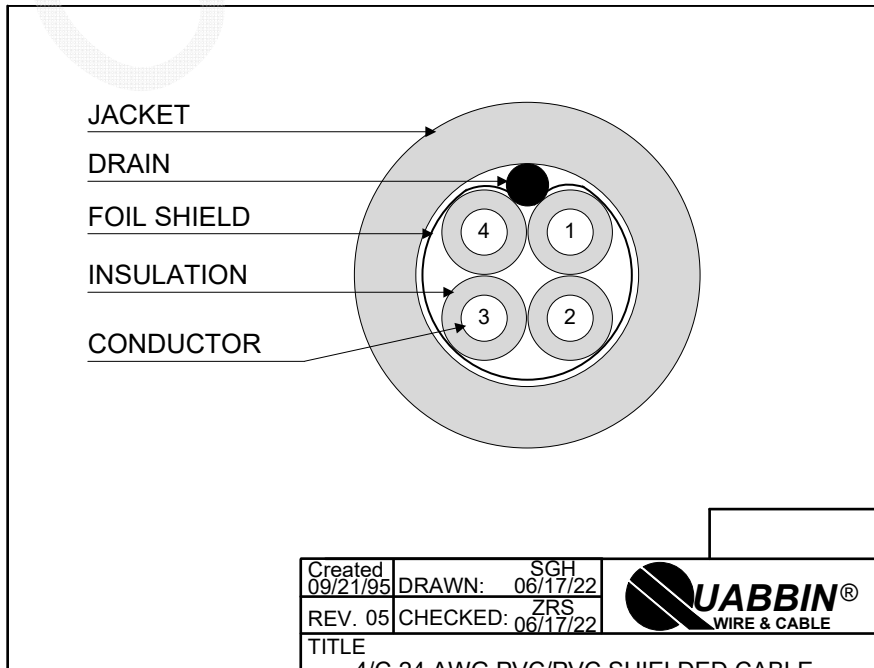
QUABBIN 8170 (UL) TYPE CM 24 AWG SHIELDED OR AWM 2464 -- CSA LL51726 AWM I/II A/B 80C 300V FT4
-- RoHS -- **(LOT DESIGNATOR)**

7) COLOR CODE:

- 1. BLACK
- 2. WHITE
- 3. RED
- 4. GREEN

8) PACKAGING:

TO BE PACKAGED AS PER QWC'S STANDARD PACKAGING



Created 09/21/95	DRAWN: SGH 06/17/22
REV. 05	CHECKED: ZRS 06/17/22



TITLE
4/C 24 AWG PVC/PVC SHIELDED CABLE --
TYPE CM, STYLE 2464, CSA AWM FT4

CUSTOMER APPROVAL:

DATE:

QUABBIN P/N	8170	1 of 1
-------------	------	--------