

1) CONSTRUCTION:		NOM. DIA.
CONDUCTOR:	22 AWG 7/30 STRANDED TINNED COPPER	.030"
INSULATION:	SEMI-RIGID POLYVINYLCHLORIDE, .010" NOM. WALL THICKNESS	.050"
CABLE:	(7) INSULATED CONDUCTORS TWISTED TOGETHER TO FORM A CABLE CORE.	.150"
SHIELD:	AN OVERALL ALUMINUM POLYESTER FOIL SHIELD (FOIL OUT, 100% COVERAGE) SHALL BE APPLIED OVER THE CABLE CORE. A SECOND SHIELD OF 36 AWG TINNED COPPER BRAID (65% MINIMUM COVERAGE) SHALL BE APPLIED OVER THE FOIL SHIELD.	.176"
JACKET:	POLYVINYLCHLORIDE, CHROME GRAY, .035" NOM. WALL THICKNESS	.246"
	OVERALL CABLE DIAMETER	

2) PHYSICAL PROPERTIES:	
TEMPERATURE RATING, MAX.	60°C & 80°C
TEMPERATURE RATING, MIN.	-20°C
WT./M', NOM., NET.	41.2 LBS.

3) ELECTRICAL CHARACTERISTICS:	
CAPACITANCE, MUTUAL, NOM.	35 PF/FT.
CAPACITANCE, GROUNDED, NOM.	63 PF/FT
DIELECTRIC WITHSTANDING, MIN.	2000V RMS
VOLTAGE RATING, MAX.	300V
D.C. RESISTANCE, MAX. PER ASTM B286	16.7 Ω/1000'

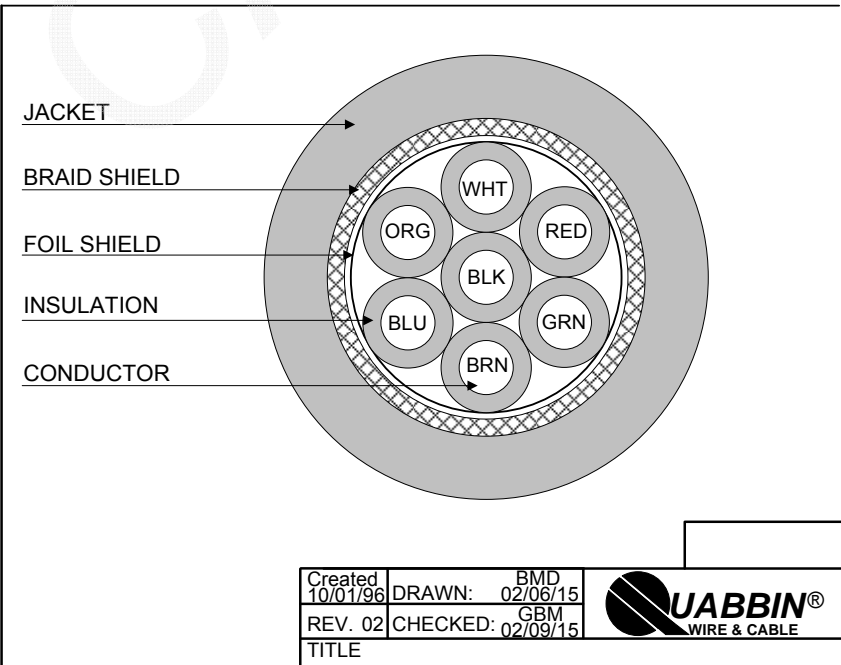
4) AGENCY APPROVALS:
 NEC (UL) TYPE CM
 (UL) AWM STYLE 2464
 CSA AWM FT4

5) APPLICATION:
 RS 232 COMPUTER INTERCONNECT AND CAD/CAM APPLICATIONS. RoHS COMPLIANT MATERIALS.

6) PRINT:
 QUABBIN 7620 (UL) TYPE CM 22 AWG SHIELDED OR AWM 2464 -- CSA LL51726 AWM I/II A/B 80C 300V FT4 -- RoHS --
(LOT DESIGNATOR)

- 7) COLOR CODE:
1. BLACK
 2. WHITE
 3. RED
 4. GREEN
 5. BROWN
 6. BLUE
 7. ORANGE

8) PACKAGING:
 TO BE PACKAGED AS PER QWC'S
 STANDARD PACKAGING



Created 10/01/96	DRAWN: BMD 02/06/15	
REV. 02	CHECKED: GBM 02/09/15	
TITLE		
7/C 22 AWG PVC/PVC SHIELDED CABLE -- TYPE CM, STYLE 2464, CSA AWM FT4		
QUABBIN P/N	7620	1 of 1

CUSTOMER APPROVAL: _____ DATE: _____