

1) CONSTRUCTION:

CONDUCTOR:	22 AWG 7/30 STRANDED TINNED COPPER	NOM. DIA.	.030"
INSULATION:	POLYPROPYLENE, .008" NOM. WALL THICKNESS		.046" ± .001"
PAIRS:	COLOR CODED SINGLES TWISTED INTO PAIRS, PAIRS CABLED TOGETHER ON A COMMON AXIS		.115"
SHIELD:	EACH PAIR WITH AN ALUMINIZED POLYESTER FOIL SHIELD (FOIL OUT, 100% COVERAGE). A 24 AWG 7/32 STRANDED TINNED COPPER DRAIN WIRE SHALL PROVIDE A COMMON TERMINATION OF SHIELDS.		.118"
JACKET:	POLYVINYLCHLORIDE, CHROME GRAY, .022" NOM. WALL THICKNESS (PRESSURE)	OVERALL CABLE DIAMETER	.165" ± .005" (BY MICROMETER)

2) PHYSICAL PROPERTIES:

TEMPERATURE RATING, MAX.	60° C
TEMPERATURE RATING, MIN.	-20° C
WT./M', NOM., NET.	20.3 LBS.

3) ELECTRICAL CHARACTERISTICS:

CAPACITANCE, MUTUAL, NOM.	35 PF/FT.
CAPACITANCE, GROUNDED, NOM.	62 PF/FT
DIELECTRIC WITHSTANDING, MIN.	1500V RMS
VOLTAGE RATING, MAX.	300V PER ARTICLE 800
D.C. RESISTANCE, MAX.	16.7 Ω/1,000'
IMPEDANCE, CHARACTERISTIC, NOM.	45 Ω
ATTENUATION	4.4dB/100M AT 1 MHz

4) AGENCY APPROVALS:

- NEC (UL) TYPE CM
- CEC C(UL) TYPE CM

5) APPLICATION:

RoHS COMPLIANT MATERIALS

6) PRINT:

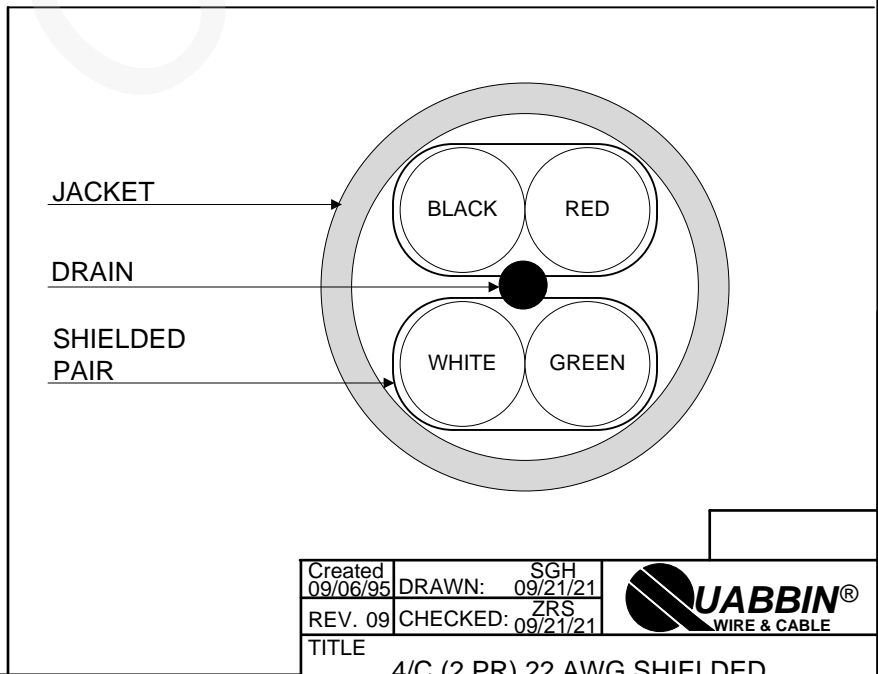
QUABBIN 7395 TYPE CM C(UL)US 22 AWG SHIELDED -- RoHS -- (LOT DESIGNATOR)

7) COLOR CODE:

- 1. BLACK X RED
- 2. WHITE X GREEN

8) PACKAGING:

TO BE PACKAGED AS PER QWC'S STANDARD PACKAGING



CUSTOMER APPROVAL:

DATE:

Created 09/06/95	DRAWN: SGH 09/21/21
REV. 09	CHECKED: ZRS 09/21/21



TITLE  
4/C (2 PR) 22 AWG SHIELDED  
PPRO/PVC -- TYPE CM C(UL)US

QUABBIN P/N 7395 1 of 1