

1) CONSTRUCTION:

CONDUCTOR:	22 AWG 7/30 STRANDED TINNED COPPER	NOM. DIA.	.030"
INSULATION:	POLYPROPYLENE, .009" NOM. WALL THICKNESS		.048" ± .001"
CABLE:	(2) COLOR CODED SINGLES TWISTED TO FORM A CABLE CORE.		.096"
SHIELD:	ALUMINIZED POLYESTER FOIL SHIELD (FOIL OUT, 100% COVERAGE) WITH A 22 AWG 7/30 STRANDED TINNED COPPER DRAIN WIRE CONTACTING THE METALIZED SURFACE FOR EASY TERMINATION.		.099"
JACKET:	POLYVINYLCHLORIDE, BLACK, .018" NOM. WALL THICKNESS (PRESSURE JACKET)	OVERALL CABLE DIAMETER	.135" ± .005" (BY MICROMETER)

2) PHYSICAL PROPERTIES:

TEMPERATURE RATING, MAX.	60°C & 80°C
TEMPERATURE RATING, MIN.	-20°C
WT./M', NOM., NET.	13.2 LBS.

3) ELECTRICAL CHARACTERISTICS:

CAPACITANCE, MUTUAL, NOM.	32 PF/FT.
CAPACITANCE, GROUNDED, NOM.	56 PF/FT.
IMPEDANCE, CHARACTERISTIC, NOM.	48 Ω
DIELECTRIC WITHSTAND, MIN	1500V RMS
VOLTAGE RATING, MAX.	300V
D.C. RESISTANCE, MAX.	16.4 Ω/1,000'

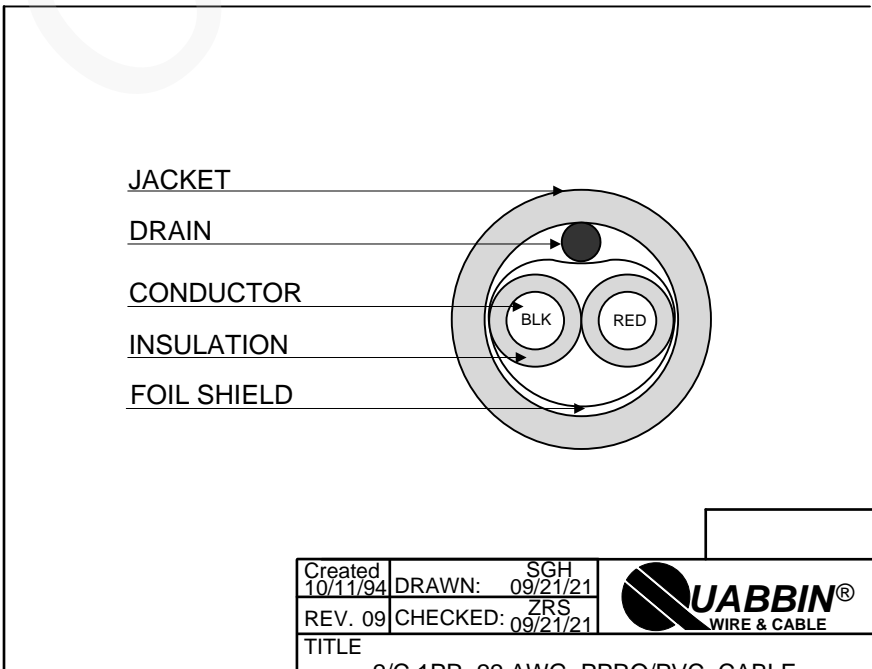
4) AGENCY APPROVALS:
 NEC (UL) TYPE CM
 CEC C(UL) TYPE CM
 UL AWM STYLE 20093

5) APPLICATION:
 RoHS COMPLIANT MATERIALS.

6) PRINT: (WHITE INK)
 QUABBIN 7316 TYPE CM C(UL)US 22 AWG SHIELDED OR AWM 20093 -- RoHS -- **(LOT DESIGNATOR)**

7) COLOR CODE:
 1. BLACK
 2. RED

8) PACKAGING:
 TO BE PACKAGED AS PER QWC'S
 STANDARD PACKAGING



Created 10/11/94	DRAWN: SGH 09/21/21	
REV. 09	CHECKED: ZRS 09/21/21	
TITLE 2/C 1PR 22 AWG PPRO/PVC CABLE -- TYPE CM C(UL)US, AWM 20093		
QUABBIN P/N	7316	1 of 1

CUSTOMER APPROVAL:

DATE: