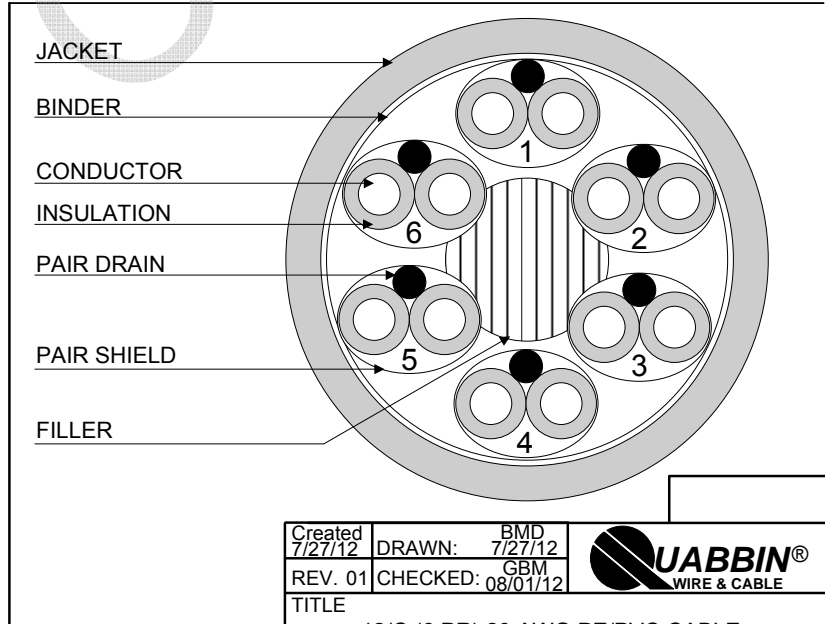


- 1) CONSTRUCTION:
- | | | | |
|-------------|---|------------------------|-------|
| CONDUCTOR: | 20 AWG 7/28 STRANDED TINNED COPPER | NOM. DIA. | .038" |
| INSULATION: | HIGH DENSITY POLYETHYLENE, .013" NOM. WALL THICKNESS | | .064" |
| PAIRS: | COLOR CODED SINGLES TWISTED INTO PAIRS | | .128" |
| SHIELD: | EACH PAIR SHALL BE COVERED WITH AN ALUMINIZED POLYESTER FOIL SHIELD (FOIL IN, 100% COVERAGE) AND CONTAIN A 22 AWG 7/30 STRANDED TINNED COPPER DRAIN WIRE IN CONTACT WITH THE METALIZED SURFACE. SHIELDS SHALL BE ISOLATED BY AN EDGE FREE TAPE. | | .131" |
| CABLE: | (6) SHIELDED PAIRS TWISTED TOGETHER WITH FILLER AND WRAPPED WITH A CLEAR POLYESTER BINDER TO FORM A CABLE CORE. | | .365" |
| JACKET: | POLYVINYLCHLORIDE, CHROME GRAY, .037" NOM. WALL THICKNESS | OVERALL CABLE DIAMETER | .439" |
- 2) PHYSICAL PROPERTIES:
- | | |
|--------------------------|-------------------|
| TEMPERATURE RATING, MAX. | 60°C, 75°C & 80°C |
| TEMPERATURE RATING, MIN. | -20°C |
| WT./M', NOM., NET. | 104.4 LBS. |
- 3) ELECTRICAL CHARACTERISTICS:
- | | |
|---|---------------|
| CAPACITANCE, MUTUAL, NOM. | 30 PF/FT. |
| CAPACITANCE, GROUNDED, NOM. | 55 PF/FT |
| DIELECTRIC WITHSTANDING, MIN VOLTAGE RATING, MAX. | 2000V RMS |
| D.C. RESISTANCE, MAX. PER ASTM B286 | 300V |
| | 10.4 Ω/1,000' |
- 4) AGENCY APPROVALS:
- NEC (UL) TYPE CM
 - UL AWM STYLE 2919
 - CSA TYPE CMG
- 5) APPLICATION:
- DATA AND COMPUTER INTERCONNECT CABLE. RoHS COMPLIANT MATERIALS.
- 6) PRINT:
- QUABBIN P/N 6160R (UL) TYPE CM 20 AWG 75C SHIELDED OR AWM 2919 -- LOW VOLTAGE COMPUTER CABLE -- CSA LL51726 TYPE CMG 60C -- RoHS -- **(LOT DESIGNATOR)**

- 7) COLOR CODE:
1. BLACK X RED
 2. BLACK X WHITE
 3. BLACK X GREEN
 4. BLACK X BLUE
 5. BLACK X YELLOW
 6. BLACK X BROWN
- 8) PACKAGING:
- TO BE PACKAGED AS PER QWC'S STANDARD PACKAGING



Created 7/27/12	DRAWN: BMD 7/27/12	
REV. 01	CHECKED: GBM 08/01/12	
TITLE		
12/C (6 PR) 20 AWG PE/PVC CABLE -- TYPE CM, STYLE 2919, CSA TYPE CMG		
QUABBIN P/N	6160	1 of 1

CUSTOMER APPROVAL: _____ DATE: _____