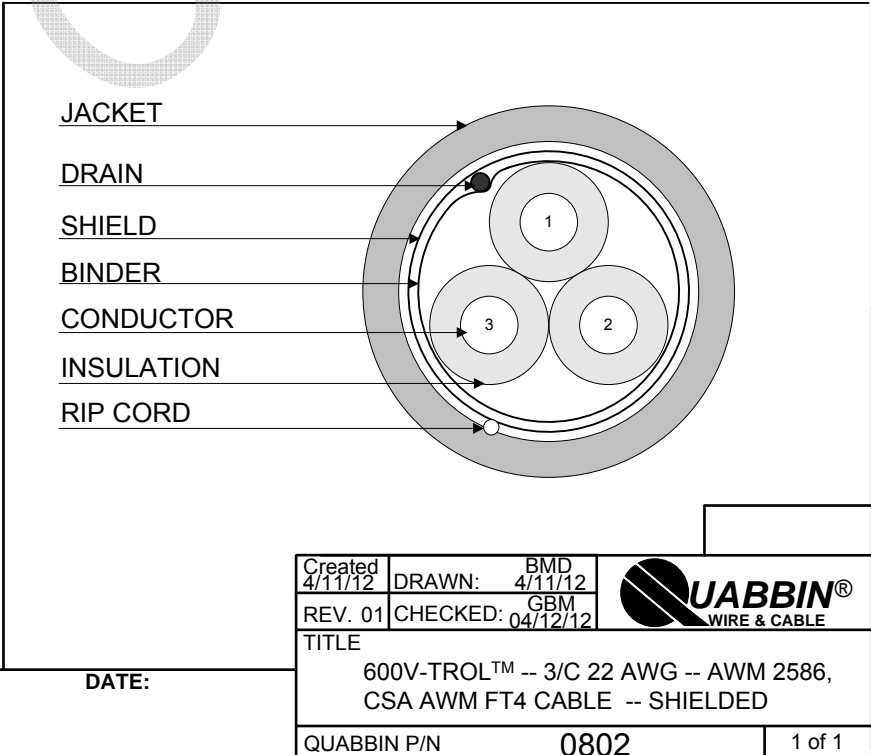


- 1) CONSTRUCTION:
- | | | | |
|-------------|--|-----------|-------|
| CONDUCTOR: | 22 AWG 7/30 STRANDED TINNED COPPER | NOM. DIA. | .030" |
| INSULATION: | POLYVINYLCHLORIDE, .016" NOM. WALL THICKNESS | | .062" |
| CABLE: | (3) COLOR CODED SINGLES TWISTED TOGETHER AND WRAPPED WITH A CLEAR POLYESTER BINDER TO FORM A CABLE CORE. | | .136" |
| SHIELD: | AN OVERALL ALUMINUM POLYESTER FOIL SHIELD (FOIL IN, 100% COVERAGE) SHALL BE APPLIED OVER THE CABLE CORE AND SHALL INCLUDE A 22 AWG 7/30 STRANDED TINNED COPPER DRAIN WIRE IN CONTACT WITH THE METALIZED SURFACE. | | .139" |
| RIPCORD: | INCLUDED UNDER JACKET FOR STRIPPING | | |
| JACKET: | POLYVINYLCHLORIDE, CHROME GRAY, .032" NOM. WALL THICKNESS. OVER ALL CABLE DIAMETER | | .203" |
- 2) PHYSICAL PROPERTIES:
- | | |
|--------------------------|-----------|
| TEMPERATURE RATING, MAX. | 105° C |
| WT./M', NOM., NET. | 24.2 LBS. |
- 3) ELECTRICAL CHARACTERISTICS:
- | | |
|-------------------------------------|--------------|
| CAPACITANCE, MUTUAL, NOM. | 31 PF/FT. |
| CAPACITANCE, GROUNDED, NOM. | 57 PF/FT. |
| DIELECTRIC WITHSTANDING, MIN. | 2000V RMS |
| VOLTAGE RATING, MAX. | 600V |
| D.C. RESISTANCE, MAX. PER ASTM B286 | 16.7 Ω/1000' |
- 4) AGENCY APPROVALS:
- CSA AWM FT4
UL AWM STYLE 2586 105C 600V
- 5) APPLICATION:
- RoHS COMPLIANT MATERIALS.
- 6) PRINT:
- 600V-TROL™ E69976 **RU** AWM 2586 VW-1 -- CSA LL51726 AWM I/II A/B 105C 600V FT4 -- RoHS -- **(LOT DESIGNATOR)**
- 7) COLOR CODE:
1. BLACK
 2. BROWN
 3. RED
- 8) PACKAGING
- TO BE PACKAGED AS PER QWC'S STANDARD PACKAGING



CUSTOMER APPROVAL:

DATE: